



Standard Floating Turtle Trap

ASSEMBLY INSTRUCTIONS



SCAN FOR ASSEMBLY VIDEO



Package Contents

- Aluminum Frame Top
- 2 Flaps
- 2 Molded Vinyl Floats
- 1 Aluminum U-Bracket
- Mesh Cage

Cage Hardware

- (A) 16 Stainless Steel J-Clips

Float Hardware

- (B) 4 Galvanized 3/8" Bolts
- (C) 4 Nuts
- (D) 4 Square Tube Bushings
- (E) 12 Large Flat Washers

Flap & U-Bracket Hardware

- (F) 6 Stainless Steel Screws with Lock Nuts (4 for flaps, 2 for U-Bracket)

Tools Needed

- Cordless Drill/Impact
- Crescent Wrench
- Phillips Head Screwdriver
- Pliers

Step 1: Form the cage with the mesh panels. Carefully fold back each of the four sides. You may have to repeat the motion a few times on the same panel to get it to stand up straight.

Step 2: In each corner, beginning with the top square, connect the panels using 4 stainless steel J-Clips (A) per edge, crimping each with a pliers. See Figure 1. Secure clips on the top square, and continue down the side connecting the 5th, 7th, and 9th squares. You are skipping the 2nd and 3rd squares to leave room for the aluminum frame to fit onto the cage.

Figure 1: Attach J-Clips

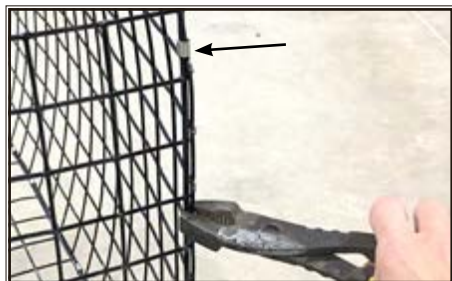


Figure 2: Outside Cage Float Hardware



Step 3: Set the aluminum frame on top of the cage adjusting the mesh slightly as you press down on each side and corner until it's firmly level on top of the cage.

Step 4: Add the support U-bracket positioning it around the bottom and sides of the cage. Line up the holes on the U-bracket and frame, sliding the bracket between the cage and frame. Secure the bracket on each side using 2 of the stainless screws and nuts (F).

Step 5: Line up one of the vinyl floats with 3/8" bolts (B), tube bushings (D) and large washers (E) to the outside of the frame and cage as pictured in Figure 2.

Step 6: Secure the float hardware inside the cage using a flat washer (E) and nut (C) on each bolt. You'll need to position the washer in between the two pieces of mesh in the corner order for it to lay flat enough to secure the cage. Repeat for the second float. See Figure 3.

Step 7: Notice the frame and flaps are color coded with dots. Match up the correct flap to the correct side according to the dots. Attach flap to hinges on the frame with 4 remaining small stainless screws and nuts (F). Repeat for the second flap.

The larger hole on the side toward the bottom of the U-Bracket provides a safe place to secure a rope for pulling the trap in and out of the pond. See Figure 4.

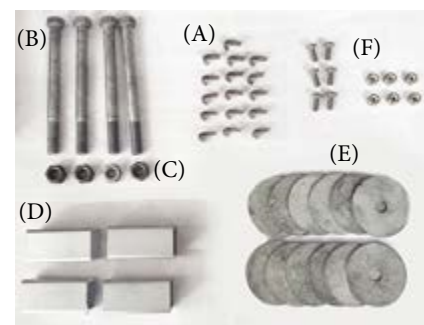


Figure 3: Inside Cage Float Hardware



Figure 4: Hole for Attaching Rope

